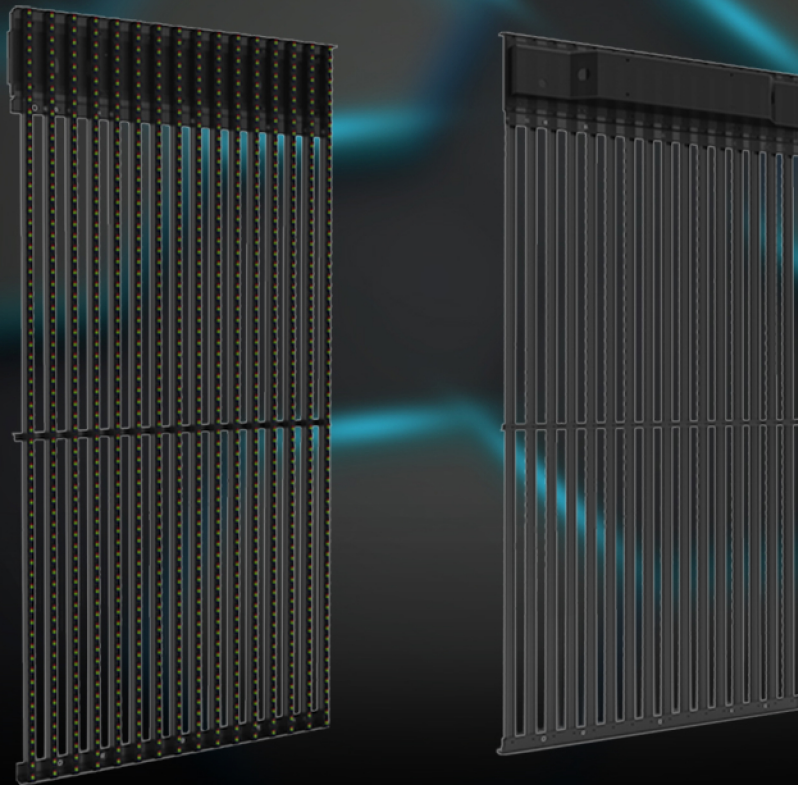


# EA15 Series



Part Number	EA16	EA1531	EA1541	EA1550
Pixel pitch	16mm	15.6/31.2mm	15.6/41.6mm	15.6/50mm
LED type	DIP346	DIP346	DIP346	DIP346
Pixel configuration	1R1G1B	1R1G1B	1R1G1B	1R1G1B
Size of module	1280mmx23.8mm	10mmx1000mm	10mmx1000/250mm	10mmx1000/250mm
Resolution of module	80x2	1x64	1x64/96	1x64/96
Density(dots/m <sup>2</sup> )	3906	2048	1536	1280
Cabinet material	Alu	Alu	Alu	Alu
Size of cabinet(mm)	1280x320	500x1000/1500	500x1000/1500	500x1000/1500
Weight of cabinet	8KG	7.5KG	7KG	6.5KG
Max power consumption	570W/m <sup>2</sup>	500W/m <sup>2</sup>	450W/m <sup>2</sup>	430W/m <sup>2</sup>
Average power consumption	150W/m <sup>2</sup>	120W/m <sup>2</sup>	124W/m <sup>2</sup>	110W/m <sup>2</sup>
Colors	16.7M	16.7M	16.7M	16.7M
Gray scale	14bits	14bits	14bits	14bits
Color temperature	3000-10000K	3000-10000K	3000-10000K	3000-10000K
Driving method	Static scanning	Static scanning	Static scanning	Static scanning
Refresh frequency	2000Hz	2000Hz	2000Hz	2000Hz
Brightness	8000cd/m <sup>2</sup>	8500cd/m <sup>2</sup>	7500cd/m <sup>2</sup>	7000cd/m <sup>2</sup>
Brightness control	256 grade	256 grade	256 grade	256 grade
IP grade	IP65	IP65	IP65	IP65